

GSM

Quick guide

ENG

WiFi Alde Control

Alde 3010, 3020 og 3030



www.gsmteknik.dk

1: Features:

- **Control Heating:** Turn the Alde heater on and off via your phone.
- **Temperature-Based Control:** Turn the heater on or off based on the outdoor temperature.
- **Built-in Clock and Timer:** Includes clock and timer functions with day, week, and date settings.

Share Access with Others in the Home:

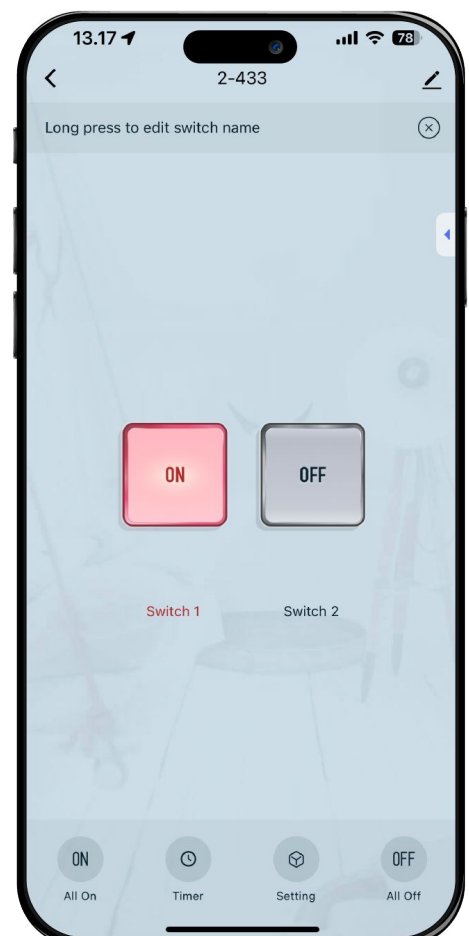
- With a few simple steps, you can invite other people to use your WiFi controller through the Smart Life app. These users will be able to turn the heater on and off just like you can.

Set a Timer:

- The app allows you to set a timer so the controller automatically turns the heater on or off at a specific time of day or week.

Connect Additional Devices to Alde Control:

- For example, you can connect your refrigerator or other lights to the Alde control, allowing them to be turned on or off through the controller.



2. Our variant

WIFI ALDE CONTROLLER TO 3010, 3020 OG 3030

Description:

- This small, smart box can remotely control the Alde central heating in your camper with WiFi. It connects easily directly to the Alde unit via the included Alde intermediate cable, which simply plugs into the correct socket on your Alde heating system. For an Alde 3010, it should be connected to the "EXT" socket on the back of the control panel, and for an Alde 3020, it should be connected to the "EXT" socket on the control board located on the Alde unit itself (not in the panel). You may ask your camping dealer or GSM Teknik for assistance.
- The controller is connected directly to the caravan's 12V battery, but if desired, it can also be connected to 230V via an optional power adapter.
- The controller also has an extra relay available, which can be used for many other purposes in the caravan—only your imagination sets the limits.



Technical Data:

- **Relay Outputs:** 2x Potential-free outputs 2200W (10A/230VAC NC/NO)
- **Wireless:** IEEE 802.11 B/G/N (2.4GHz) + Bluetooth
- **Operating Temperature:** -20°C ~ 70°C
- **Power Supply:** 7-32VDC
- **Radio Frequency:** 433.92MHz (e.g., can be connected to a remote control)
- **Easy Setup:** In Tuya Smart Life
- **Power Failure Notification:** Yes
- **Compatibility:** Google Home & Amazon Alexa

3. Setup for the App

1. Power Up the WiFi Alde Controller



1. Connect Power:

- Open both covers on the device to reveal the connectors and terminals.
- Connect the control cable to the “NO” and “COM” terminals on Line 1, as shown below.
- Connect the power supply to the caravan’s electrical system. The device supports 7-32V (AC/DC).

2. Optional Power Supply:

- If you prefer to connect the device to 230V, you can purchase an optional power adapter.

Ensure all connections are secure before proceeding to the next setup steps.

Download and Set Up the Smart Life App:

1. Download the App:

- Download the free app “Smart Life” from the App Store or Google Play Store.

2. Create an Account:

- Open the app and tap “Sign up” to create a free account.
- Enter your email address and select “Denmark” if it’s not already chosen.
- In the next step, enter the 6-digit verification code sent to the email address you provided.
- Enter the 6-digit code from the email and proceed to the next step in the app.

3. Set Your Password:

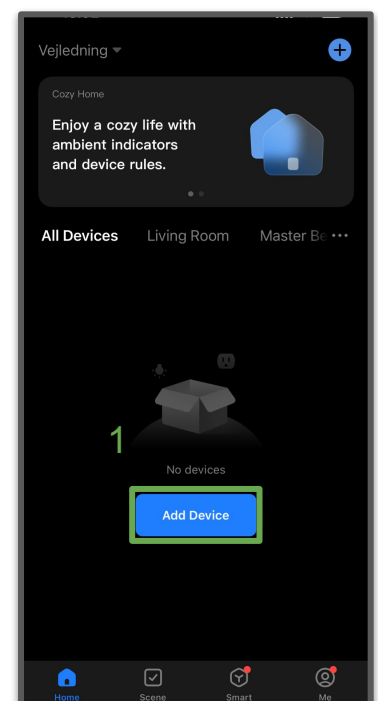
- Choose a password for the app. It’s recommended to use at least one uppercase letter and one number.

4. Start Screen:

- This is the Smart Life app’s home screen. Here you can see all your connected devices. If you don’t have any devices yet and want to add one, tap on “ADD DEVICE” (1).

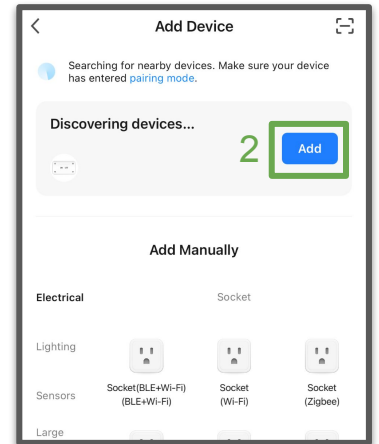
5. Check Settings:

- Before moving to the next step, ensure that both Wi-Fi and Bluetooth are enabled on your phone.



5. After a short while, the app will display a message saying “Discovering devices.”

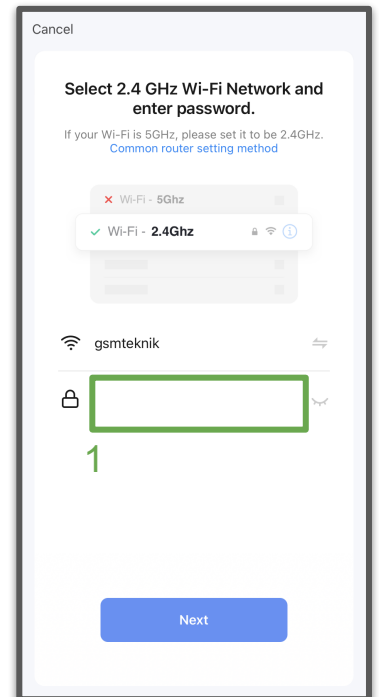
1. **Tap “Add”:**
 - The app will start searching for available devices.
2. **Select Your Device:**
 - When your device appears in the list, tap “Add” to proceed with the setup.



6. Enter Your WiFi Code:

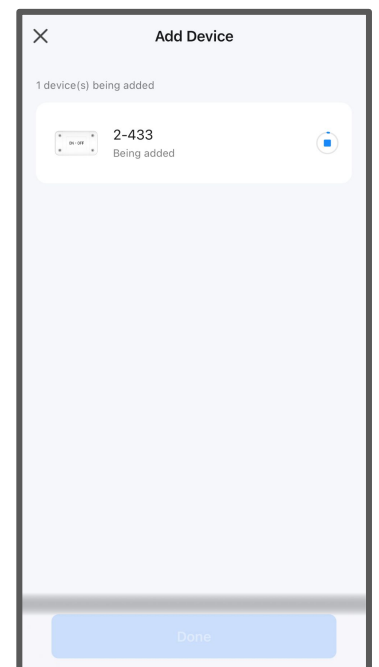
1. **Enter WiFi Code:**
 - Type your WiFi password into the field with the padlock icon (1).
2. **Tap “Next”:**
 - Proceed by tapping “Next”.

Note: Ensure that your phone is connected to a 2.4GHz network, as the device connects to a 2.4GHz network and not a 5GHz network.



7. Adding the Product:

1. **Wait for Completion:**
 - The product will now be added to the app. This process may take between 1-5 minutes.
2. **Finish Setup:**
 - Once the process is complete, tap “Done” at the bottom of the app to finish.



After Adding the Product:

8. Set the Mode:

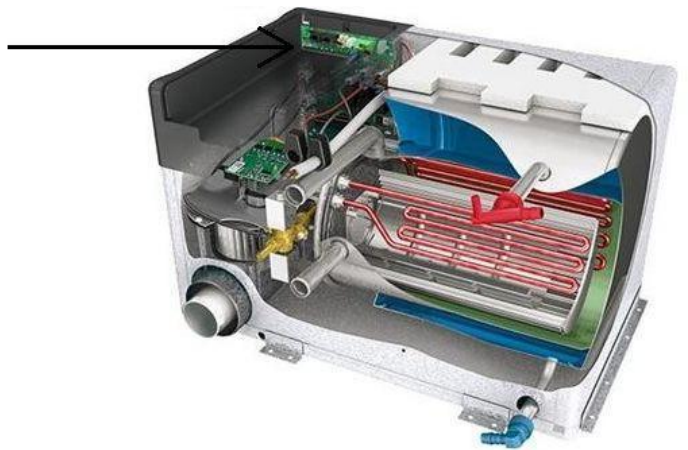
- Once the product has been added to the app, press the “Mode” button on the WiFi Alde controller once. This will ensure that the relay stays continuously engaged.



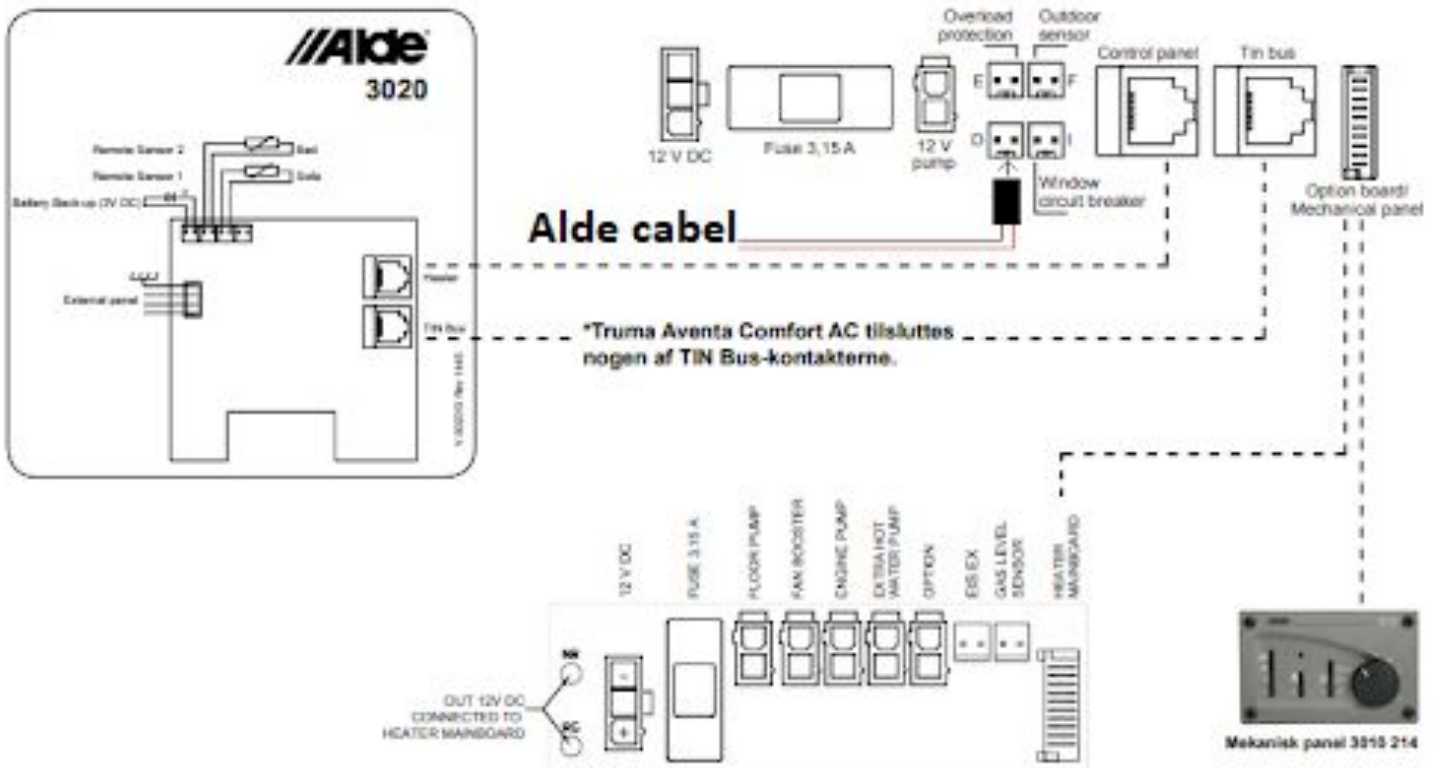
4.1 Connecting to Alde Compact 3020 HE

Locate the Control Board:

- Open the Alde Compact 3020 HE unit and find the control board. The “EXT” socket is located on this board.

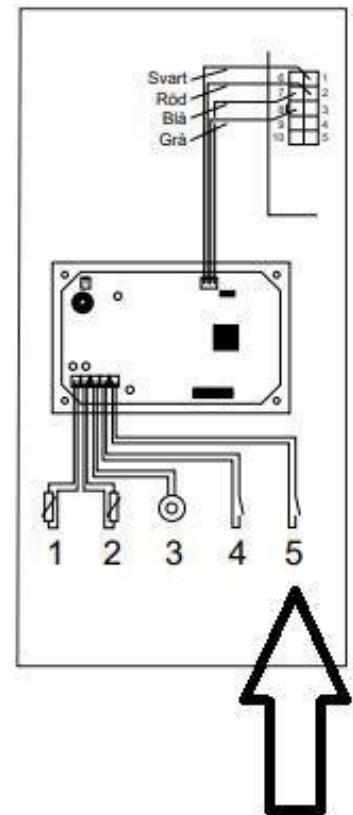


Drawing of the Connection to Alde Compact 3020 HE



4.2 Connecting to Alde 3010 Digital Panel

1. The Alde control cable is connected as shown below and plugged into the "External Start" socket, Number 5 as indicated in the picture.



2. Connect it to the back of the panel. Then, in the panel settings, set it to external control.

14. External start		Ext
<p>This function is used, if you want to start the heating from outside. To use this function it is necessary to have an installation for external start (see instructions for</p>		<p>vehicle, boat or building). To activate external start, first light up the lower menu row of functions (see item 12).</p>
<p>1. Press the button with the arrow until the "Ext" symbol flashes. The "OFF" text is shown next to the temperature in the display.</p>	<p>2. Press the +/On button. The "ON" text is shown next to the temperature in the display.</p>	<p>3. Press the button with the arrow until the On symbol (main breaker) flashes. Press -/Off.</p>
<p>4. Off and Ext are shown in the display when the panel returns to standby. External start is activated.</p>	<p>When external start is activated the heater will start with the latest settings and "ON" (main breaker) comes on. If 12V is not connected to the heater, the display will not light up until 12V is connected. The external start function is still activated.</p>	<p>To switch off external start, go to the "Ext" symbol in the on position and press the -/Off button.</p>

4.3 Connection to Alde Compact 3030 HE Truma

The included Alde cable is connected to the ext. start connector on the circuit board (on the boiler itself)



Turn on external start on panel

Press MENU then scroll down to page 2, press external start and select external signal



5. Using the Controller

On/off

(Depending on which line you have connected the AIDE cable to, you need to turn Switch 1 or Switch 2 on or off.) If the controller is off, press Off to turn it On.

Turn all lines on and off at once.

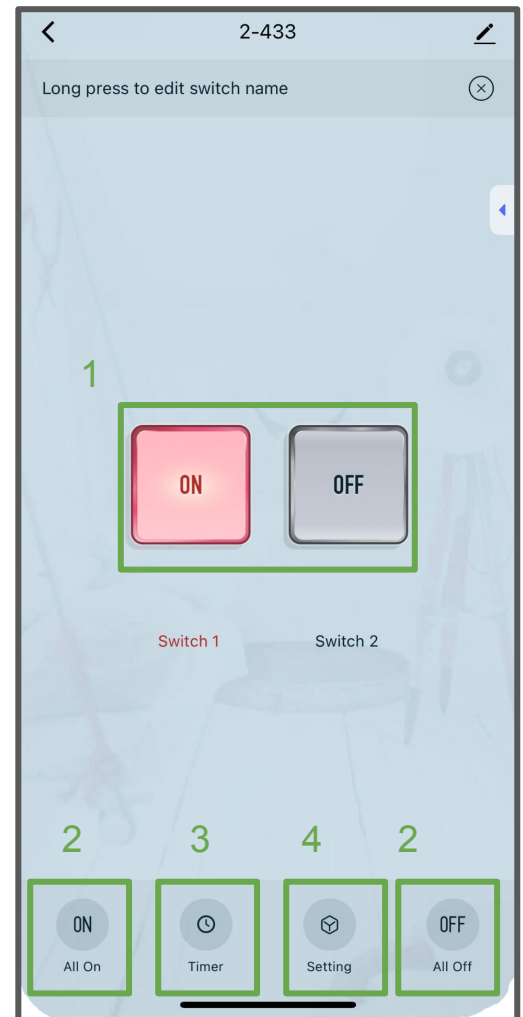
If you want to turn both lines on or off at once, you can press **All On** (Tænd) or **All Off** (Sluk).

Timer

If you want the controller to turn on or off automatically at a specific time of day or week, press **Timer**

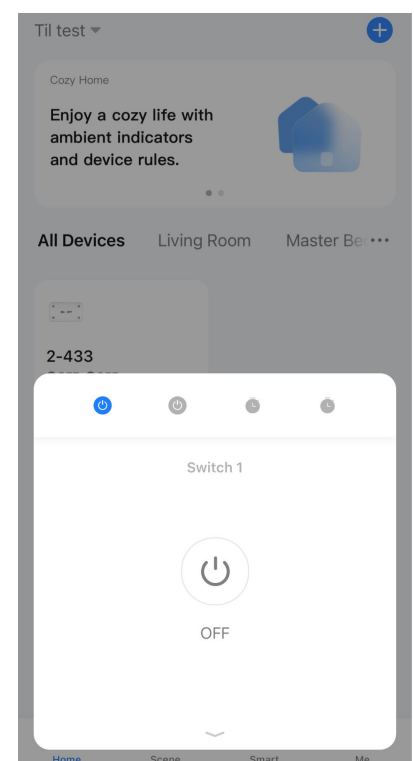
Settings

Allows you to adjust some small settings for the controller



Quick Control

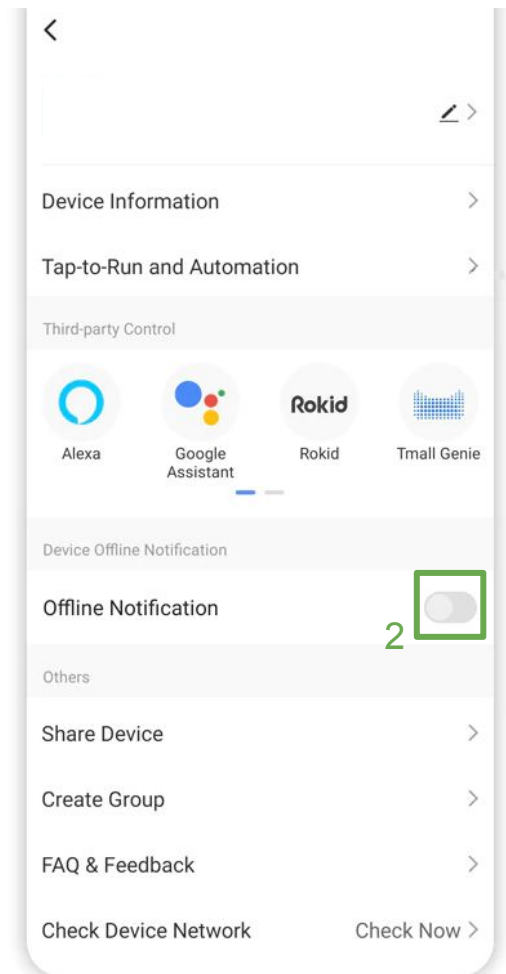
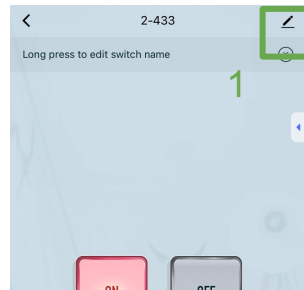
By pressing the small arrow under the controller at the start of the app, you can quickly turn the controller on or off or access the timer



6. Receive Push Notifications if the Device Goes Offline

When you are on the desired device, tap the pencil icon in the top right corner (1).

Then press (2) to turn it green. You will now receive a push notification from the Smart Life app if the device loses connection to your WiFi router. This may indicate a power outage.



7. Keep Your Device Updated

Since the supplier continually updates their products, it's a good idea to enable automatic updates to ensure your equipment always has the latest updates.

1. **Tap the Pencil Icon:** Press the pencil icon in the top right corner (see the top image).
2. **Scroll Down:** Use your finger to scroll down.
3. **Tap on "Device Update":** If an update is available, you will see an option to tap **Update**, as shown in the example image.
4. **Enable Auto Update:** Turn on the auto-update feature if you want the device to update automatically (3).

