

GSM

User Manual

ENG

GSM Alde Styring for Alde 3010, 3020 and 3030



www.gsmteknik.dk

2. Our variant

GSM ALDE STYRING for 3010, 3020 and 3030

Description:

It easily connects directly to the Alde unit via the included Alde intermediate cable, which is simply plugged into the correct socket on your Alde heating system. If it is an Alde 3010, it should be connected to the "EXT" socket at the back of the control panel, and if it is an Alde 3020, it should be connected to the "EXT" socket on the control board, located on the Alde unit itself (not in the panel). You may want to ask your camping dealer or GSM Teknik for assistance.

This GSM control Simpal D410 has 2 relays that can be controlled via SMS messages. It has a built-in temperature sensor (included), allowing it to be used for temperature control, meaning that with our control unit, it can turn the boiler on and off when the temperature reaches a certain level. It has a built-in battery that provides notifications in case of a power outage. It is mounted on a small DIN rail/wall bracket, which is also included. The D410 is powered by 12VDC, for example from the caravan's battery or by 230VAC (power socket) via the included power adapter.

Technical Data:

- Relay outputs: 2 pcs. (16A/230VAC NC/NO)
- Digital inputs: 1 pc.
- Mounting: DIN rail (bracket included)
- GSM network: 4G
- Power supply: 12VDC (230VAC power adapter included)
- Temperature sensor: Included with 1m cable (-30 to +100 degrees C)
- Number of storable phone numbers: 200



Product Description:

1. Power supply (230VAC)
2. Temperature sensor cable
3. Alde connection cable
4. Simpal D410 control unit

3. Simcard

GSM Teknik offers several telecom providers, e.g., Greentel. This unit operates on 4G and switches to 2G in areas without 4G coverage.

If the SIM card cannot find any coverage, it's a good idea to place the unit in a location with better reception. If this does not work, it may be that the selected provider does not cover the area where the alarm is located, and another SIM card may be needed.

Insert SIM Card

On the side of the unit, you'll find the slot where the SIM card should be inserted. Before inserting the SIM card into the control unit, ensure that there is no PIN code. This PIN code is removed by GSM Teknik when purchasing the SIM card from us. Do not insert the SIM card while the GSM unit is powered on. The SIM card must be inserted correctly and clicked into place to lock it. Now turn on the unit by plugging it into the socket and wait about 30-60 seconds for it to go online and be ready for use.

GSM and POWER Indicators

There are 3 LED lights on the front of the unit that provide status indications.

GSM Indicator

Pulses slowly (1 time/second) = Connected to the GSM network or in standby mode (ok).
Blinks rapidly (2 times/second) = Attempting to connect to the GSM network or sending/receiving SMS messages.

Line 1 Indicator and Line 2 Indicator

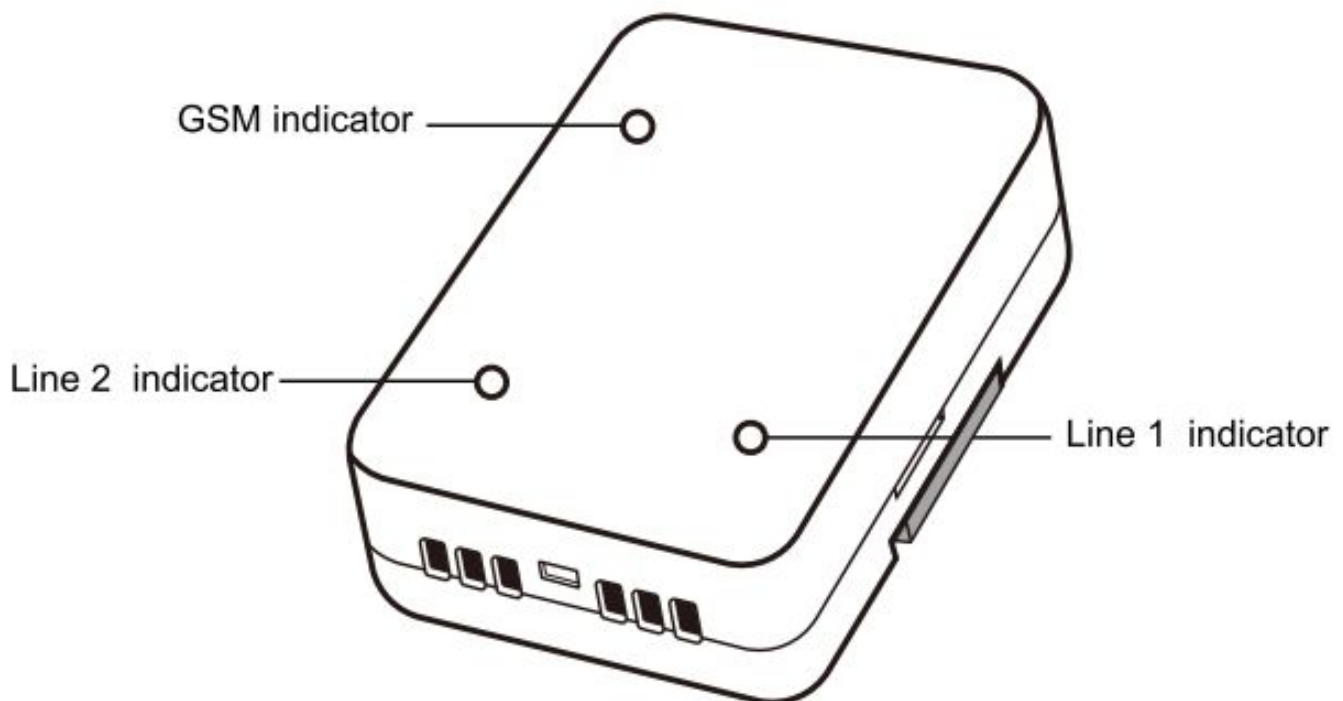
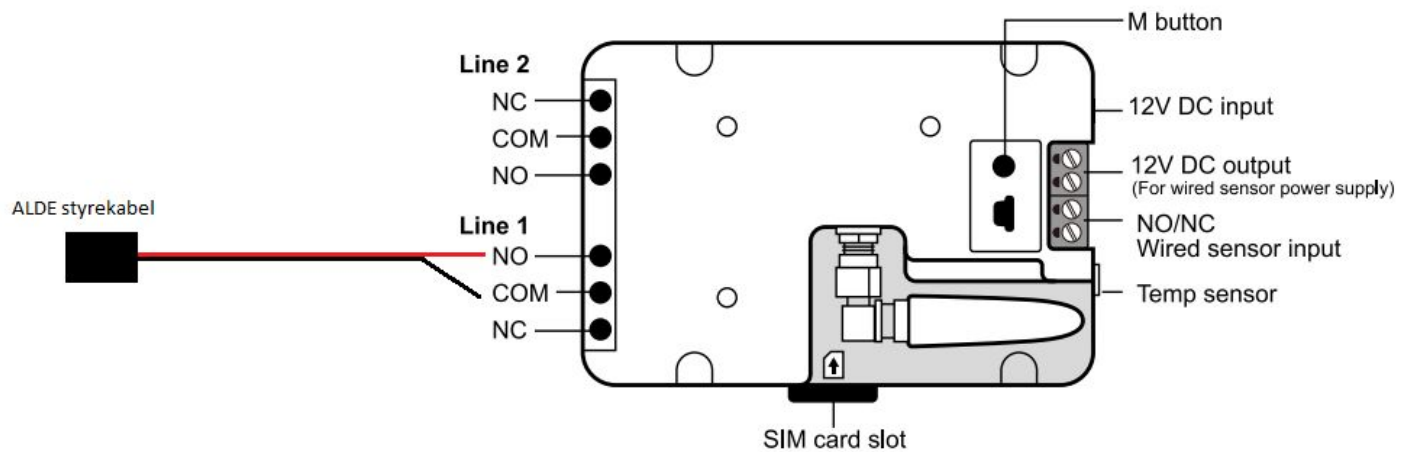
Off = Output 1 or 2 is OFF

On = Output 1 or 2 is ON

4. Connecting the Alde Connection Cable

Connecting Wires and Connectors

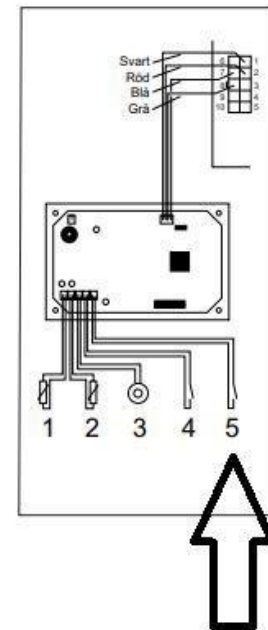
When you open the lid of the unit, several connectors and terminals appear, which can be connected to the temperature sensor, alarm, and outputs for, e.g., the Alde control cable. The control cable is connected to Line 1 at “NO” and “COM” as shown here:



Connection to Alde 3010 Digital Panel

The Alde control cable is connected as shown below and plugged into the “External Start” socket.

Connect it at the back of the panel. Then, in the panel settings, set it to external control. For more details, refer to the guide under here.



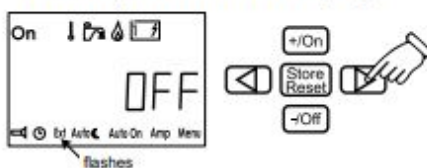
14. External start

Ext

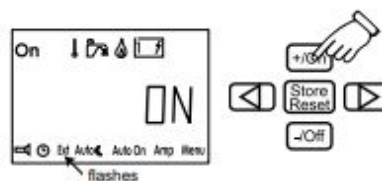
This function is used, if you want to start the heating from outside. To use this function it is necessary to have an installation for external start (see instructions for

vehicle, boat or building). To activate external start, first light up the lower menu row of functions (see item 12).

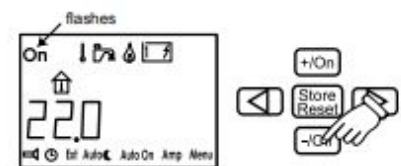
1. Press the button with the arrow until the "Ext" symbol flashes. The "OFF" text is shown next to the temperature in the display.



2. Press the +/On button. The "ON" text is shown next to the temperature in the display.



3. Press the button with the arrow until the On symbol (main breaker) flashes. Press -/Off.



4. Off and Ext are shown in the display when the panel returns to standby. External start is activated.



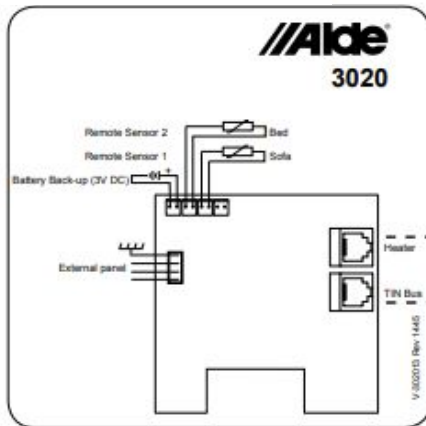
When external start is activated the heater will start with the latest settings and "ON" (main breaker) comes on. If 12V is not connected to the heater, the display will not light up until 12V is connected. The external start function is still activated.

To switch off external start, go to the "Ext" symbol in the on position and press the -/Off button.

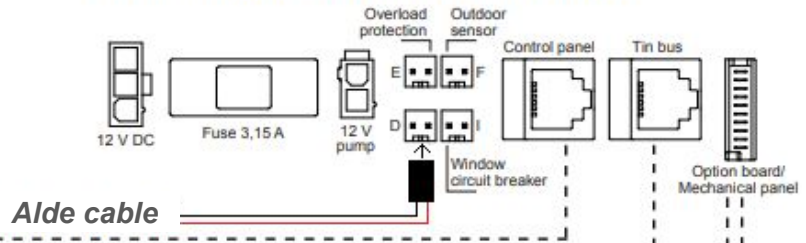
Connection to Alde Compact 3020 HE

The Alde control cable is connected as shown below and plugged into the “External Start” socket.

Backside of panel

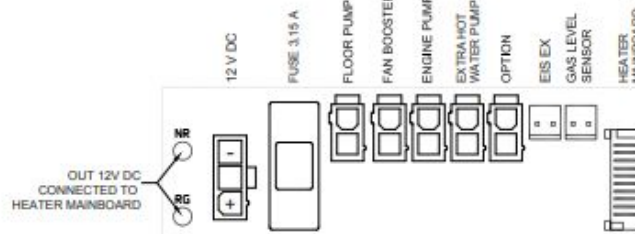


Circuit Board on the Compact 3020 HE Boiler

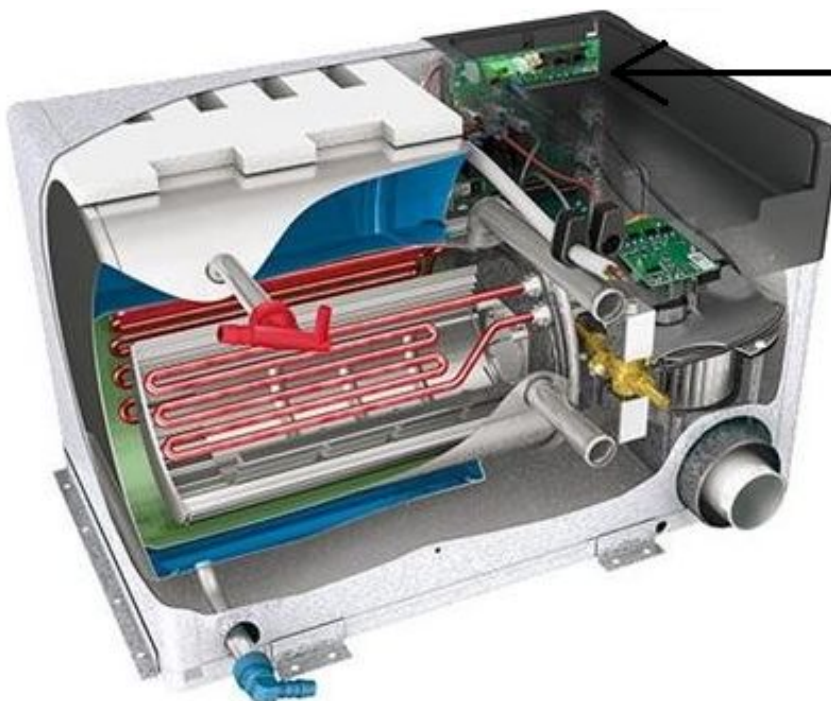


Alde cable

Truma Aventa Comfort AC is connected to any of the TIN Bus contacts



Option card for compact 3020



The cable is connected on this circuit board

Connection to Alde Compact 3030 HE Truma

The included Alde cable is connected to the ext. start connector on the circuit board (on the boiler its



Turn on external start on panel

Press MENU then scroll down to page 2, press external start and select external signal



5. SMS Commands

All of the commands listed below are sent to the SIM card phone number that is installed in the unit.

Add Master Number	#00#	Must be done first.
Change Master Number	#14#xxxxxxxx#	xxxxxxxx is the phone number.
Add Family Number	#06#xxxxxxxx#	xxxxxxxx is the phone number.
Check Family Number	#06#	
Slet family-nummer	#15#xxxxxxxx#	xxxxxxxx is the phone number.
Delete All Family Numbers	#15#	
Change Code	#04#old code#new code#	old code = 1234
Turn On Output 1	#01#1#	
Turn On Output 2	#01#2#	
Turn Off Output 1	#02#1#	
Turn Off Output 2	#02#2#	
Read Temperature / Status	#07#	
Thermostat Control (Output 1)	#24#1#1#Low-temp#High-temp#	Set a range to prevent constant turning on/off.
Thermostat Control (Output 2)	#24#2#1#Low-temp#High-temp#	Set a range to prevent constant turning on/off.